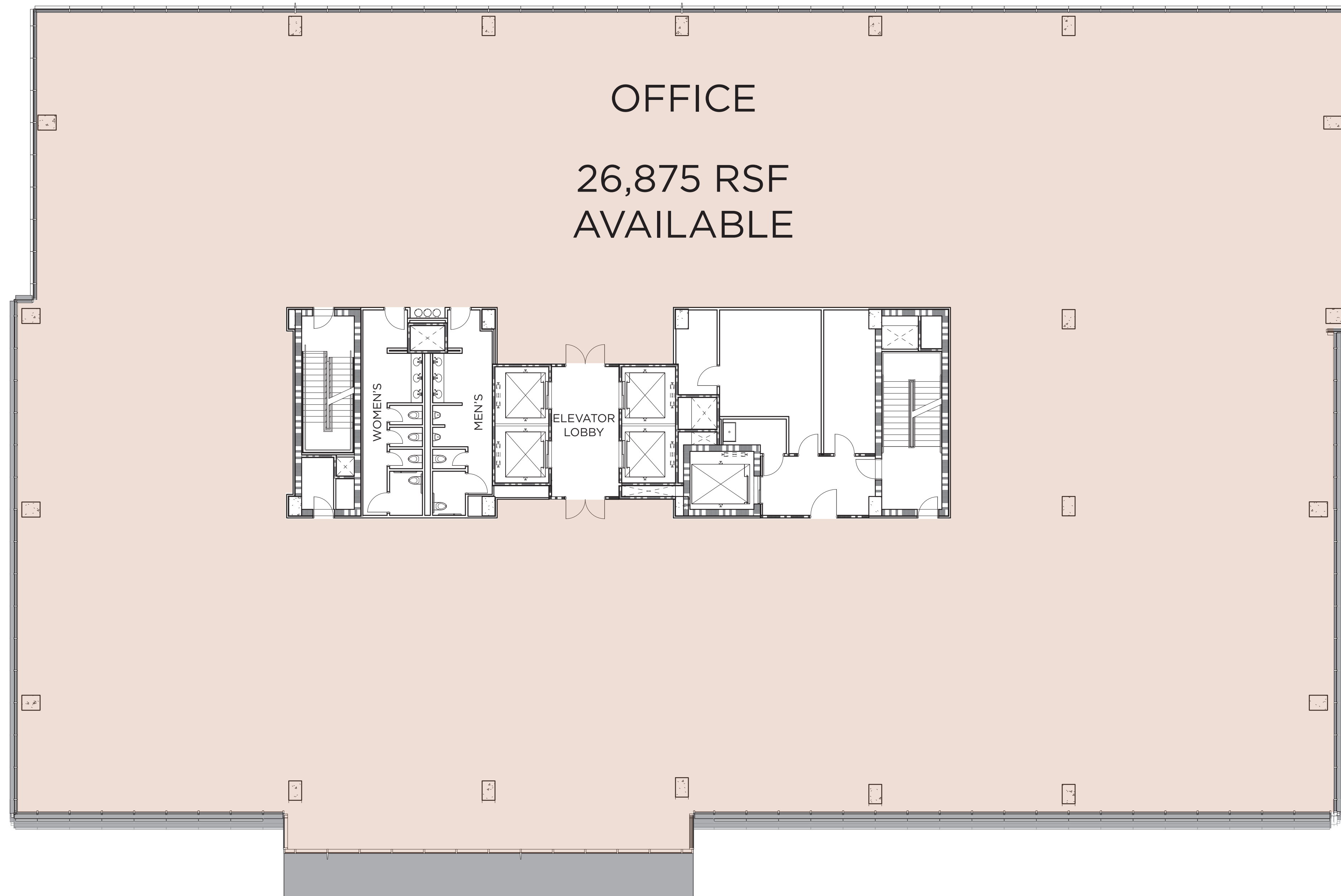


# FOURTEENTH FLOOR PLAN

## 26,875 RSF OFFICE

### HIGHLIGHTS

- Open, customizable floor plan for high efficiency layout
- Floor-to-ceiling windows with urban views and abundant natural light
- Modern common areas and restrooms



FOR OFFICE LEASING INFORMATION, CONTACT:

Hooker Manning | 919.719.5424 | [hmanning@kanerealtycorp.com](mailto:hmanning@kanerealtycorp.com)

Alex Mikels | 919.719.5415 | [amikels@kanerealtycorp.com](mailto:amikels@kanerealtycorp.com)

\* Floor plan square footage is approximate and subject to change.

WAREHOUSE DISTRICT

**THE DILLON**

OFFICES • RESIDENCES • RETAIL



**KANE**  
REALTY CORPORATION